

THE  
*Masters*  
AT LORA BAY

THE  
*Masters*  
AT LORA BAY

THE  
*Masters*  
AT LORA BAY



# THE PALMER

3065 SF | Elevation B

4 Bedrooms 3 Bath ( optional finished basement )



**CALIBREX**  
DEVELOPMENTS

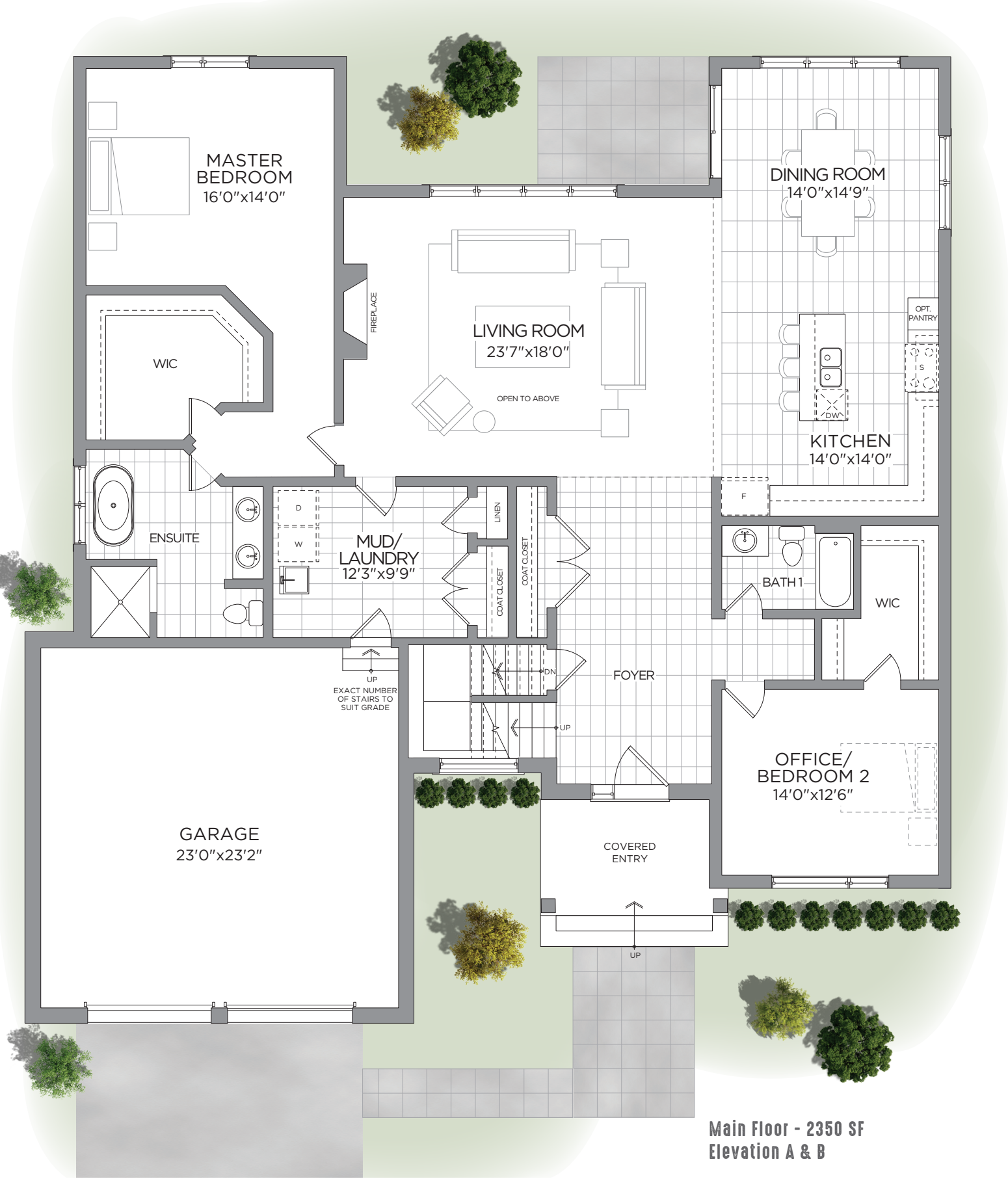
Calibrex.ca

# THE PALMER

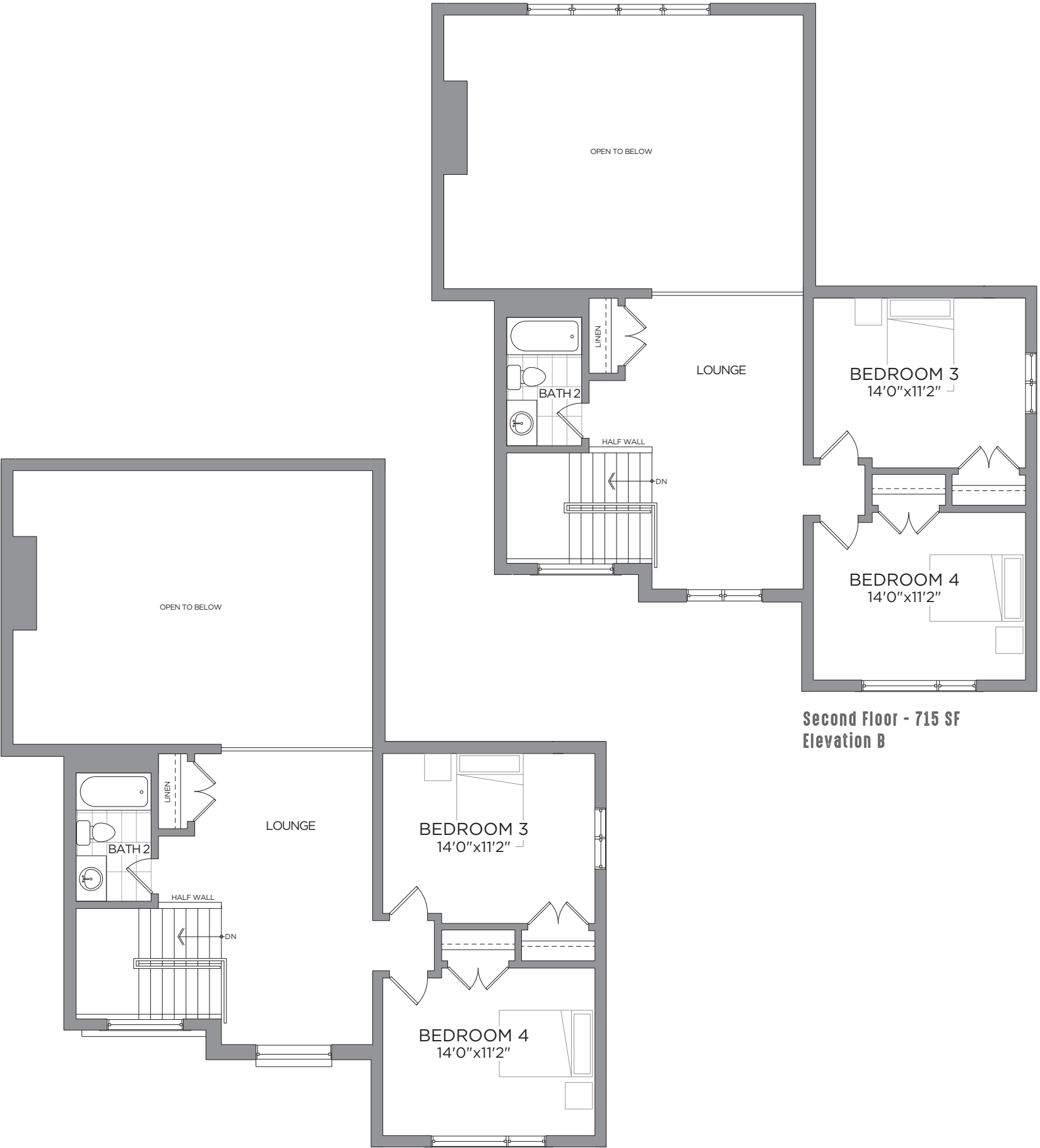
3065 SF | Elevation A

4 Bedrooms 3 Bath ( optional finished basement )

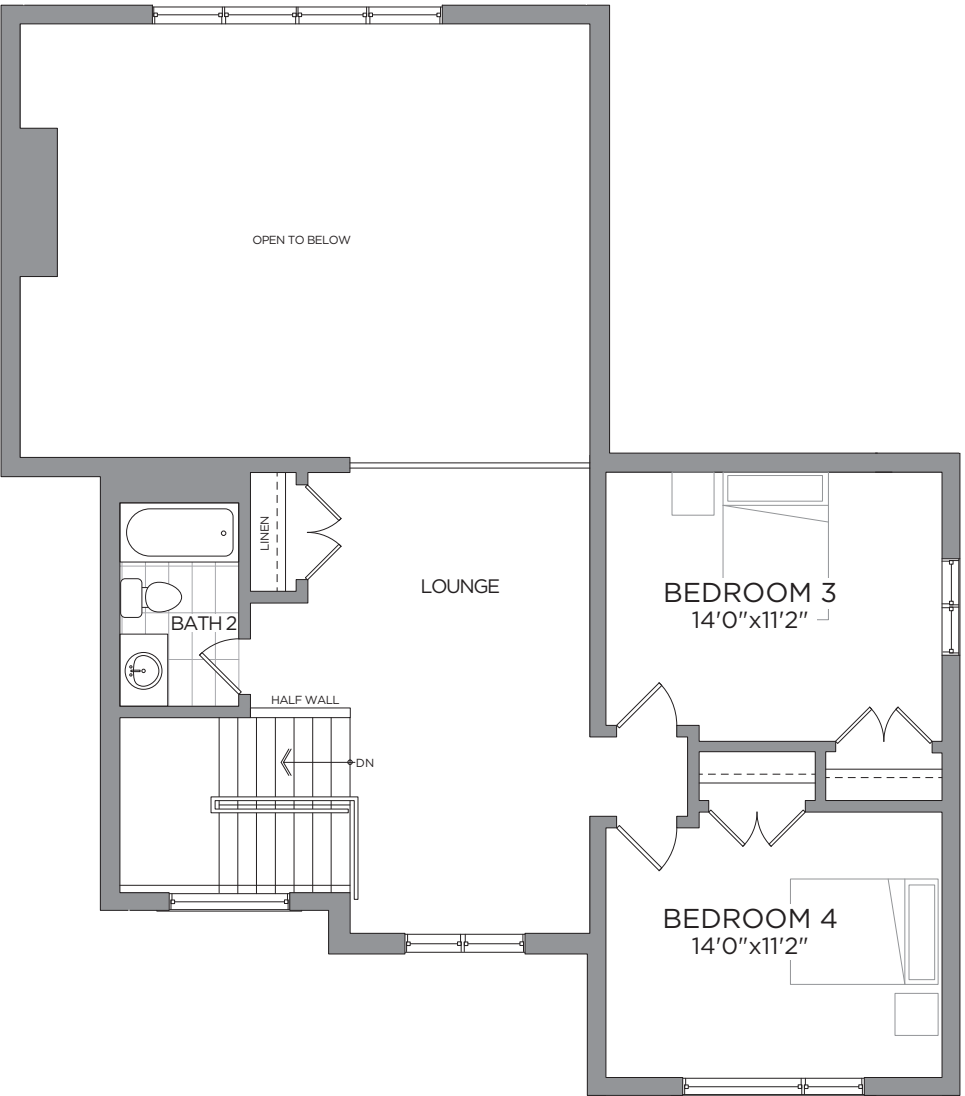




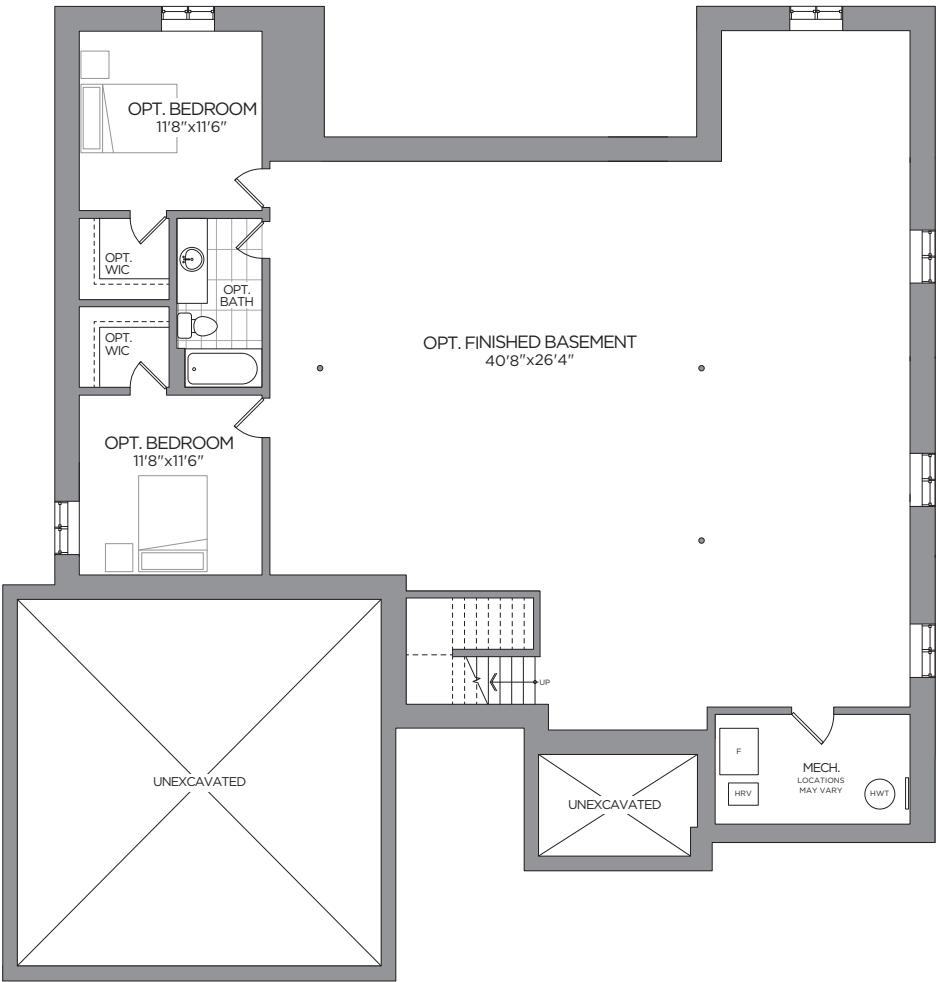
Main Floor - 2350 SF  
Elevation A & B



Second Floor - 715 SF  
Elevation A



Second Floor - 715 SF  
Elevation B



Basement  
Elevation A & B



Elevation A



Elevation B

# THE PALMER

3065 SF | 4 Bedrooms 3 Bath ( optional finished basement )

All drawings are artist's concepts and may vary slightly from the final product. Actual usable floor space may vary from stated area, and square footage has been calculated based on usable living space according to the TARIION rules, and does not include garages or unfinished basement areas. Drawings may show optional features which may not be included in the base price. Bulkheads & box outs may be required as chases for plumbing & mechanical. Garage man door location, if applicable, may vary subject to grade. In an ongoing review of homeowner's needs, changes may have been incorporated into our "New Home Features" and construction techniques. Specifications subject to change without notice. E. & O. E. July 2020